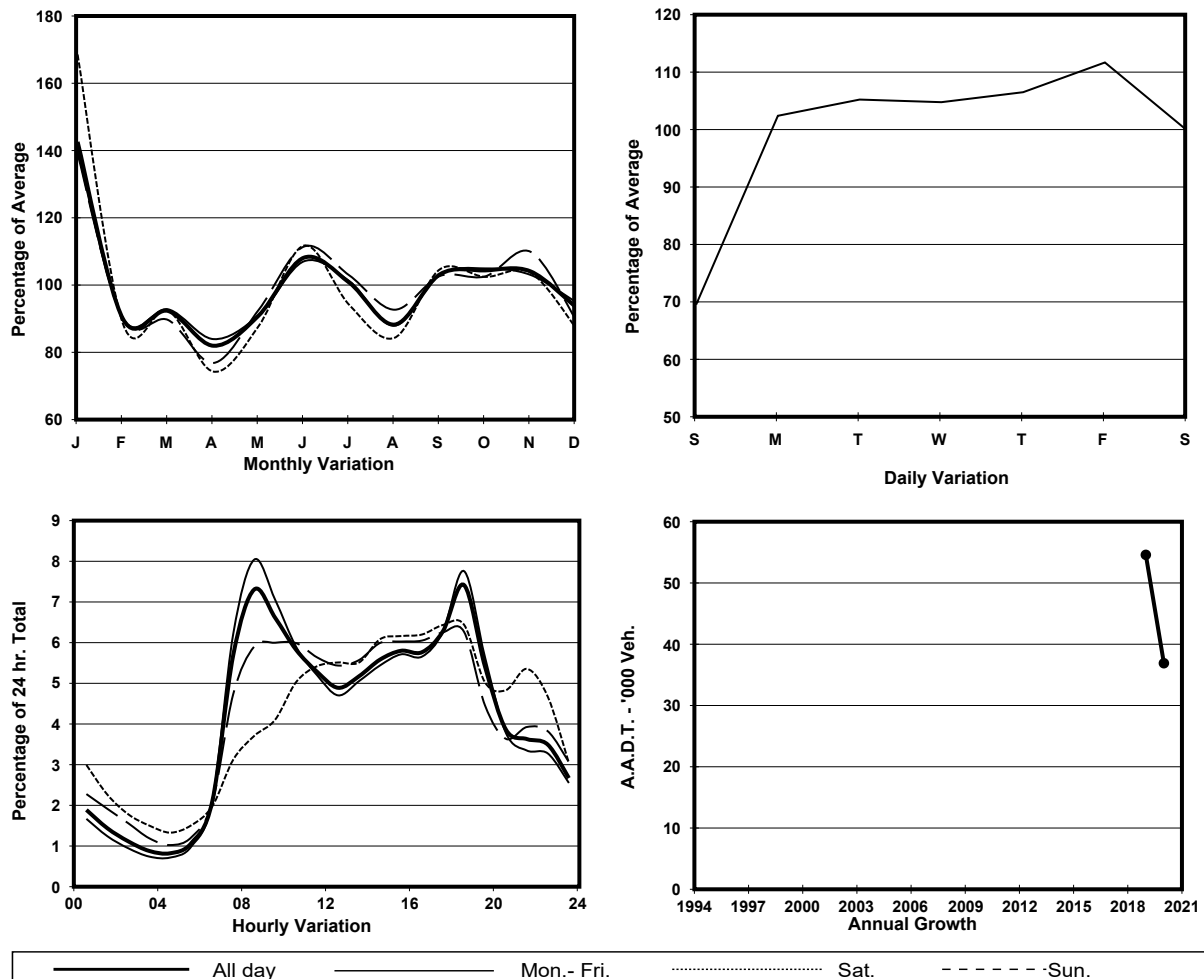


YEAR 2020
CORE STATION 5039
ROAD NETWORK MAJOR
ROAD TYPE EXPRESSWAY

LINK STONECUTTERS BRIDGE (from EAST TSING YI VIADUCT to CONTAINER PORT RD S NR CONTAINER TERMINAL 8)

10.9m
E bound 3 lanes
11m
W bound 3 lanes

1. TRAFFIC FLOW VARIATION AND GROWTH



2. TRAFFIC CHARACTERISTICS (BY DIRECTION)

Parameter	All - Day	Mon. - Fri.	Sat.	Sun.
EAST BOUND				
A.A.D.T.	19500	20960	19850	13990
R 12 / 24 - %	75.1	76.9	72.3	65.2
R 16 / 24 - %	88.6	89.5	86.8	84.8
AM Peak Hour	0800-0900	0800-0900	0900-1000	0900-1000
One-way flow at AM peak hour	1660	1970	1430	630
T - % (AM)	-	-	-	-
PM Peak Hour	1800-1900	1800-1900	1800-1900	1800-1900
One-way flow at PM peak hour	1380	1510	1250	980
T - % (PM)	-	-	-	-
Prop.of commercial vehicles - 16 hr.	-	-	-	-
WEST BOUND				
A.A.D.T.	17400	18760	17530	12380
R 12 / 24 - %	67.8	68.7	67.1	62.1
R 16 / 24 - %	87.4	88.6	84.5	82.3
AM Peak Hour	0800-0900	0800-0900	0800-0900	0900-1000
One-way flow at AM peak hour	1030	1220	830	460
T - % (AM)	-	-	-	-
PM Peak Hour	1800-1900	1800-1900	1600-1700	1600-1700
One-way flow at PM peak hour	1360	1570	1220	800
T - % (PM)	-	-	-	-
Prop.of commercial vehicles - 16 hr.	-	-	-	-

3. OTHER INFORMATION AND COMMENT